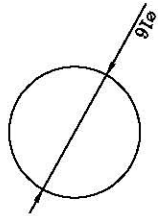
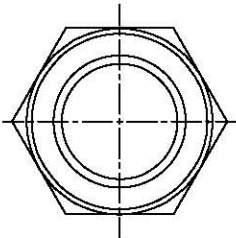
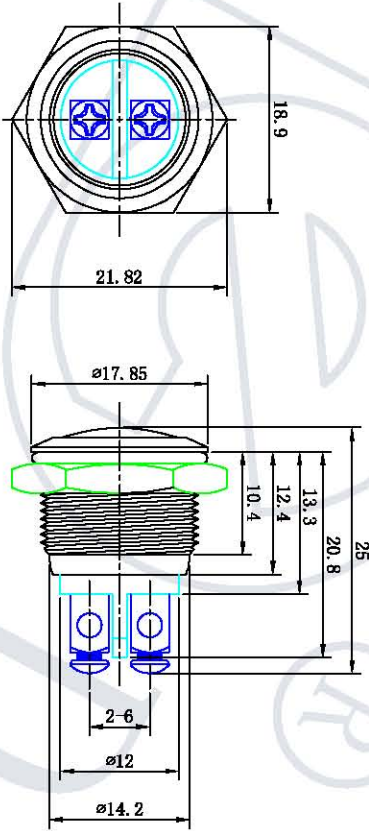
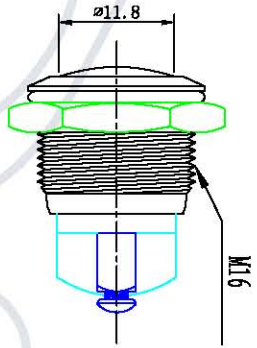
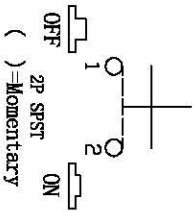


B91-09



安装面板
PANEL CUT-OUT



SPECIFICATIONS

1. Contact Rating: 2A @ 36V
2. Electrical Life: 50, 000 cycles
3. Contact Resistance: 50m-ohms max (initial)
4. Insulation Resistance: 1, 000M-ohms min @ 500VDC
5. Dielectric Strength: 2, 000V RMS 50 ~ 60Hz
6. Operating Temperature: -40° C ~ +85° C
7. Switch function : 1NO Momentary
8. IP Class: IP65 Protection
9. Torque: 5~14Nm. max. applied to nut
10. Operating Force: 5N max

MATERIALS

1. Button: Stainless Steel or Copper plating chrome
2. Bushing & Bezel: Stainless steel or Copper plating chrome
3. Base: PBT
4. Contact : Silver contact
5. Nut : Nickel plated brass

借 (通) 用件备注
插图
插校
旧底图总号
底图总号
签字
日期

标记	处数	分区	更改文件号	签字	日期
设计			标准化		
校对					
审核			批准		
工艺					

按钮开关				Yaoqing Dater Electron co., Ltd
Push Button Switch				
阶段标记	数量	重量	比例	
	1		1.5:1	
GQ-16B				
